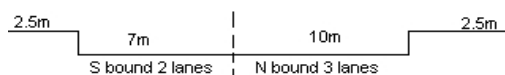
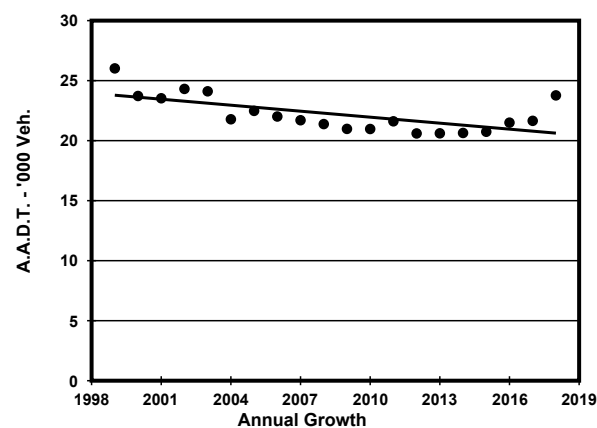
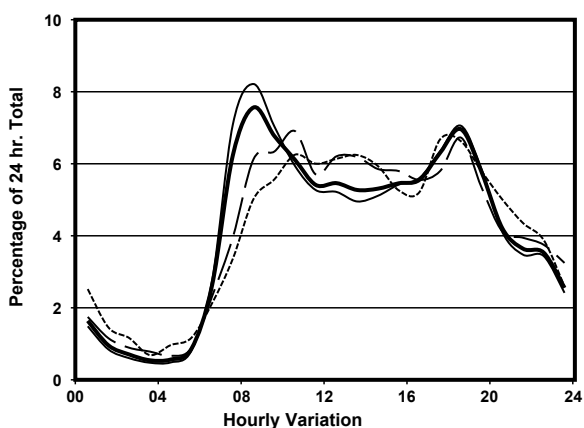
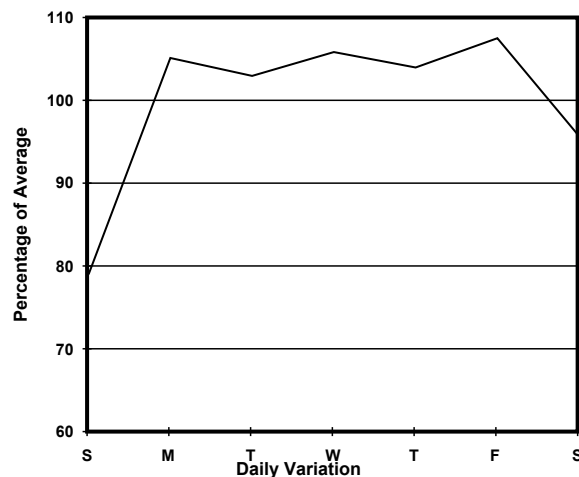
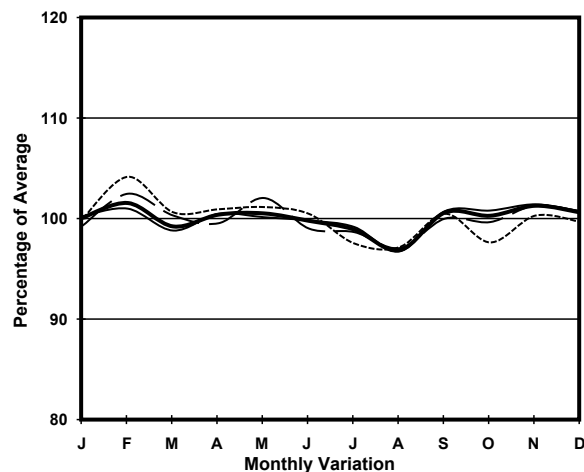


YEAR 2018
 COVERAGE (B) STATION 4211
 ROAD NETWORK MAJOR
 ROAD TYPE DISTRICT DISTRIBUTOR

LINK FAT KWONG ST (from CHUNG HAU ST to YAN FUNG ST)



1. TRAFFIC FLOW VARIATION AND GROWTH



— All day — Mon.- Fri. Sat. - - - - - Sun.

2. TRAFFIC CHARACTERISTICS (BY DIRECTION)

Parameter	All - Day	Mon. - Fri.	Sat.	Sun.
SOUTH BOUND				
A.A.D.T.	13180	13900	12750	11110
R 12 / 24 - %	69.6	70	69.1	67.7
R 16 / 24 - %	88.5	89	87	87.1
AM Peak Hour	0800-0900	0800-0900	0800-0900	0900-1000
One-way flow at AM peak hour	980	1090	850	660
T - % (AM)	-	4.6	-	-
PM Peak Hour	1800-1900	1800-1900	1800-1900	1700-1800
One-way flow at PM peak hour	1010	1100	950	780
T - % (PM)	-	3.4	-	-
Prop.of commercial vehicles - 16 hr.	-	6.9	-	-
NORTH BOUND				
A.A.D.T.	10590	11360	10240	7910
R 12 / 24 - %	75.9	77.3	73.7	69.1
R 16 / 24 - %	90.8	91.4	89.9	87.6
AM Peak Hour	0800-0900	0800-0900	0900-1000	0900-1000
One-way flow at AM peak hour	820	990	700	400
T - % (AM)	-	6.3	-	-
PM Peak Hour	1800-1900	1800-1900	1800-1900	1800-1900
One-way flow at PM peak hour	650	690	600	550
T - % (PM)	-	4.1	-	-
Prop.of commercial vehicles - 16 hr.	-	5.7	-	-

3. OTHER INFORMATION AND COMMENT

Coverage (B) Station 4211
Year 2018

4. Vehicle classification and occupancy - Monday to Friday

Time		Class of vehicle									
		Motor Cycle	Private Car	Taxi	Private LB	PLB	Goods veh.		Non Fr. Bus	Fr. Bus	
							Light	M & H		SD	DD
0700-0800	Pro	2.2	18.8	42.5	3.1	10.1	12.7	1.3	6.1	0.0	3.3
	Ocp	1.2	1.4	2.1	12.4	12.2	1.8	2.0	10.3	0.0	34.8
0800-0900 Peak hour	Pro	1.4	50.6	24.5	3.2	8.1	7.0	0.9	2.5	0.1	1.8
	Ocp	1.0	1.2	2.0	7.0	13.1	1.5	2.0	14.6	26.0	30.1
0900-1000	Pro	2.6	45.7	21.7	2.8	8.8	10.8	1.8	3.9	0.1	1.9
	Ocp	1.1	1.3	2.0	3.5	13.1	1.4	1.6	12.5	11.0	17.7
1000-1100	Pro	2.7	36.8	25.6	1.5	6.5	19.2	2.4	3.2	0.1	2.1
	Ocp	1.0	1.4	2.1	3.8	11.7	1.4	2.3	9.0	15.0	11.3
1100-1200	Pro	3.2	33.2	27.8	1.9	8.5	18.3	2.8	1.9	0.1	2.4
	Ocp	1.1	1.5	1.9	2.0	8.5	1.6	1.8	10.2	4.0	12.2
1200-1300	Pro	3.1	37.6	26.4	3.4	7.3	14.9	2.0	3.7	0.1	1.7
	Ocp	1.2	1.4	1.7	3.4	13.0	1.7	2.4	10.5	16.0	11.7
1300-1400	Pro	3.7	35.1	28.5	1.8	9.2	15.0	2.6	1.8	0.1	2.2
	Ocp	1.0	1.5	1.9	4.8	11.0	1.6	1.6	14.0	17.0	12.0
1400-1500	Pro	1.4	45.0	21.3	1.7	7.0	18.5	1.7	1.0	0.1	2.3
	Ocp	1.0	1.5	1.9	2.6	9.4	1.7	2.0	5.7	10.0	13.6
1500-1600	Pro	1.9	41.6	23.7	5.0	5.0	14.5	0.9	5.4	0.1	1.8
	Ocp	1.0	1.5	1.9	7.3	12.6	1.7	1.0	12.4	16.0	15.8
1600-1700	Pro	4.1	39.2	20.1	3.2	8.9	17.8	0.3	3.5	0.1	2.7
	Ocp	1.2	1.6	1.9	6.5	11.9	1.5	1.0	11.7	27.0	17.7
1700-1800	Pro	2.3	46.6	27.1	3.3	6.6	8.9	0.3	2.6	0.1	2.1
	Ocp	1.3	1.3	1.9	2.8	12.1	1.7	3.0	6.4	15.0	26.0
1800-1900	Pro	4.2	44.2	28.2	0.3	8.2	11.3	0.3	2.0	0.0	1.5
	Ocp	1.1	1.4	2.0	3.0	14.5	1.5	2.0	21.9	0.0	34.7
1900-2000	Pro	3.5	53.4	23.5	0.3	8.4	5.8	0.6	1.6	0.2	2.7
	Ocp	1.0	1.4	2.1	2.0	10.8	1.4	2.0	6.8	15.5	21.4
2000-2100	Pro	3.7	49.1	30.1	0.5	7.9	3.2	0.5	1.9	0.1	3.1
	Ocp	1.0	1.5	1.8	1.0	10.6	1.6	2.0	18.0	7.0	14.7
2100-2200	Pro	4.6	38.5	35.6	1.2	9.2	6.3	1.2	0.0	0.1	3.3
	Ocp	1.1	1.6	2.3	4.0	10.6	1.5	2.0	0.0	15.0	14.1
2200-2300	Pro	3.2	37.3	39.9	1.1	8.9	4.7	0.5	1.1	0.1	3.2
	Ocp	1.2	1.8	2.0	2.5	7.1	1.1	1.0	16.5	8.0	11.3
16 hours	Pro	2.9	41.5	26.9	2.2	7.9	12.2	1.3	2.7	0.1	2.3
	Ocp	1.1	1.4	2.0	5.2	11.6	1.6	1.9	11.8	14.5	18.9

Legend

Pro. Proportion of vehicles in % (Sum may not add up to 100% due to figure rounding)*

Ocp. Average occupancy of vehicles including both driver and passengers*

M&H Medium and Heavy

***** All traffic data are collected from combined bounds except for one way traffic